



TELEMATICS



**Real Time Data.
Increased Control.
Higher Profits.**

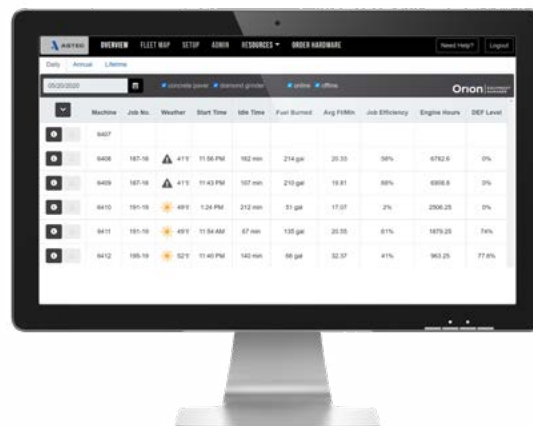


Leading in automation
control systems and
data management

BUILT TO **CONNECT**

Telematics and Equipment Manager

Our Telematics and Equipment Manager allows service technicians and owners to protect their investments and keep operating costs low by monitoring a selected machine in real time. This platform allows our customers to view the machines on the map by GPS. It also provides the efficiency of machines by providing their KPIs such as idle time, run time, fuel consumption, and many more. The weather software helps our clients understand the climate conditions on their job site.

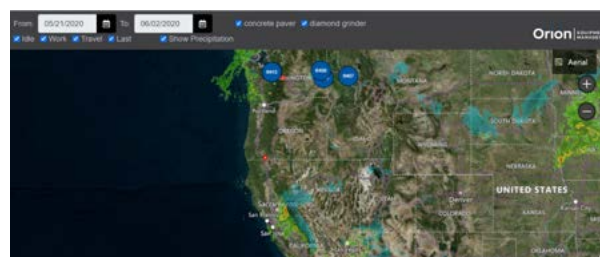


Highlights

- ✔ Concise information for equipment managers, schedulers, superintendents, and company officials.
- ✔ Machine status, faults, and production efficiency.
- ✔ Weather specific to each job site.
- ✔ Average FPM (Foot per Minute).
- ✔ Idle the time and fuel burned for the job, season, and lifetime.
- ✔ Cell phone alerts for machine start, job start, weather, engine faults, and engine derate.

Key features:

1. Provides real-time data, the date by day, season, or lifetime data
2. Machine status, faults, and production efficiency
3. Three hours advance weather forecast specific to each job site
4. The Grade Pro features provide data for every one minute, foot per minute data, desired grade setpoint and actual reading, and the percent of error
5. Idle time and fuel burned for the job, season, and lifetime
6. Machine status, faults, and production efficiency





ASTEC™

www.astecindustries.com