



MINDS

DATA SUITE

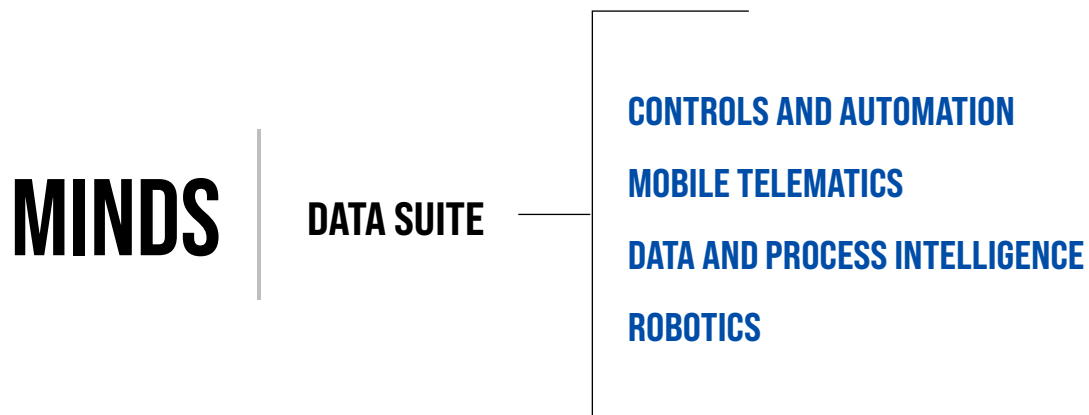
**Real Time Data.
Increased Control.
Higher Profits.**



Leading in automation
control systems and
data management

BUILT TO CONNECT

BUILT TO CONNECT



More Production. Better Accuracy. Higher Profits.

MINDS Data Suite is a complete technology solution for managing and optimizing Rock to Road® operations.



Digital Solutions for the ROCK to ROAD® Industry

Astec is a leader in advanced customizable digital solutions focused on supporting the Rock to Road industry. Our suite of digital solutions allows optimization and data-based intelligent solutions, with Astec able to deliver enhanced training, support and customer experience.



With decades of experience as a trusted vendor for Rock to Road equipment solutions, Astec technology solutions extend to all aspects of your operations, allowing similar user interface and analytics. Simplified and standardized solutions deliver enhanced coordination across your operation. Integrating services and solutions enables seamless communication between road construction, transport and production sites in a centralized digital solution.



Highlights:

- Astec is a market leader within the Rock to Road industry
- As an OEM, Astec brings intimate knowledge of equipment to pair with technology, creating an integrated system
- Astec is a long-term partner with a reputation for support and training

MINDS | CONTROLS AND AUTOMATION

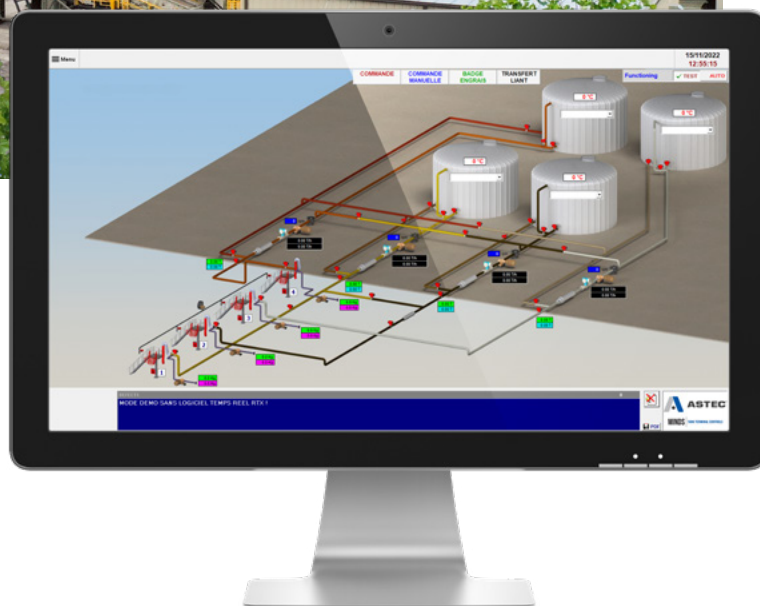
Expandable and retractable to suit your specific needs, Astec combines the best of our time-tested software with new developments to create cutting-edge controls systems. Our automation systems are renowned for reliability, configurability, and accuracy. Designed from an operator’s perspective, we utilize ergonomics to facilitate a quick grasp of the system. State-of-the-art technology enables modern mobile applications remote access, dual workstation access and more. The production-level data forms the foundation that flows up the pipeline to large-scope job/business management IT tools.

- Asphalt Drum Plant Controls**
- Asphalt Batch Plant Controls**
- Asphalt Blending Controls**
- Tank Terminal Controls**
- Emulsion and PMA Controls**
- Burner Controls**
- LoadOut Controls**



Highlights:

- Modular controls platform
- Vendor agnostic solution offerings
- Standard controls arch across the plants and fleet





MINDS

MOBILE TELEMATICS

Our telematics systems allow service technicians and owners to protect their investment and keep operating costs low by monitoring a selected machine in real time through a wireless signal, addressing any issues that may arise while the machine works. It also allows Astec customer service personnel to remotely view the machine in real time and be there for the customer anytime, anywhere. The engine, hydraulic system, electrical system, and grade control can all be monitored in detail. The machine can also be located by GPS.

**Telematics & Equipment
Diagnostics**

**Telematics & Equipment
Manager**



Highlights:

- Fixed-fleet standard telematics offer common user interface
- Access critical data and key performance indicators
- Decrease expenses and keep mobile equipment in safe operating condition by staying on top of diagnostics

MINDS

DATA AND PROCESS INTELLIGENCE

Multi-site plant management, enterprise level ticketing, quality control, material usage and inventory, and performance metrics dashboards are all part of the Data and Process Intelligence products. These information systems enable you to get the critical information that you need about your operations where you need it and when you need it. We are constantly innovating to offer the best solutions for plant managers, operators, and business managers.

LiveTank Monitor

LiveJob Monitor

Plant Operations Manger

Mix Quality Manager

LiveBin Monitor

Ticket Manager



Highlights:

- E-ticketing
- Invoicing
- Fleet tracking
- Performance metrics dashboards provide operation visibility
- Optimization and data based intelligent solutions



MINDS | ROBOTICS

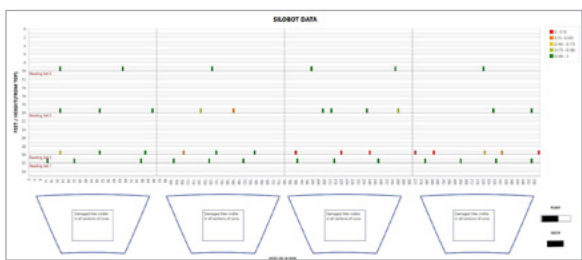
Our automation solutions enable safer and optimized operations through remote or robotic processes. Astec entered the robotics sector in 2016 with the SiloBotSM inspection service, using a proprietary remote controlled device that inspects the structural integrity of asphalt storage silos. As Astec has gained knowledge and experience in use of robotics, new applications are being identified and developed to bring even more value and resolution to inspection services.

**SiloBot
Inspection Service**

**PlenumBot
Inspection Service**

***silo
bot***TM

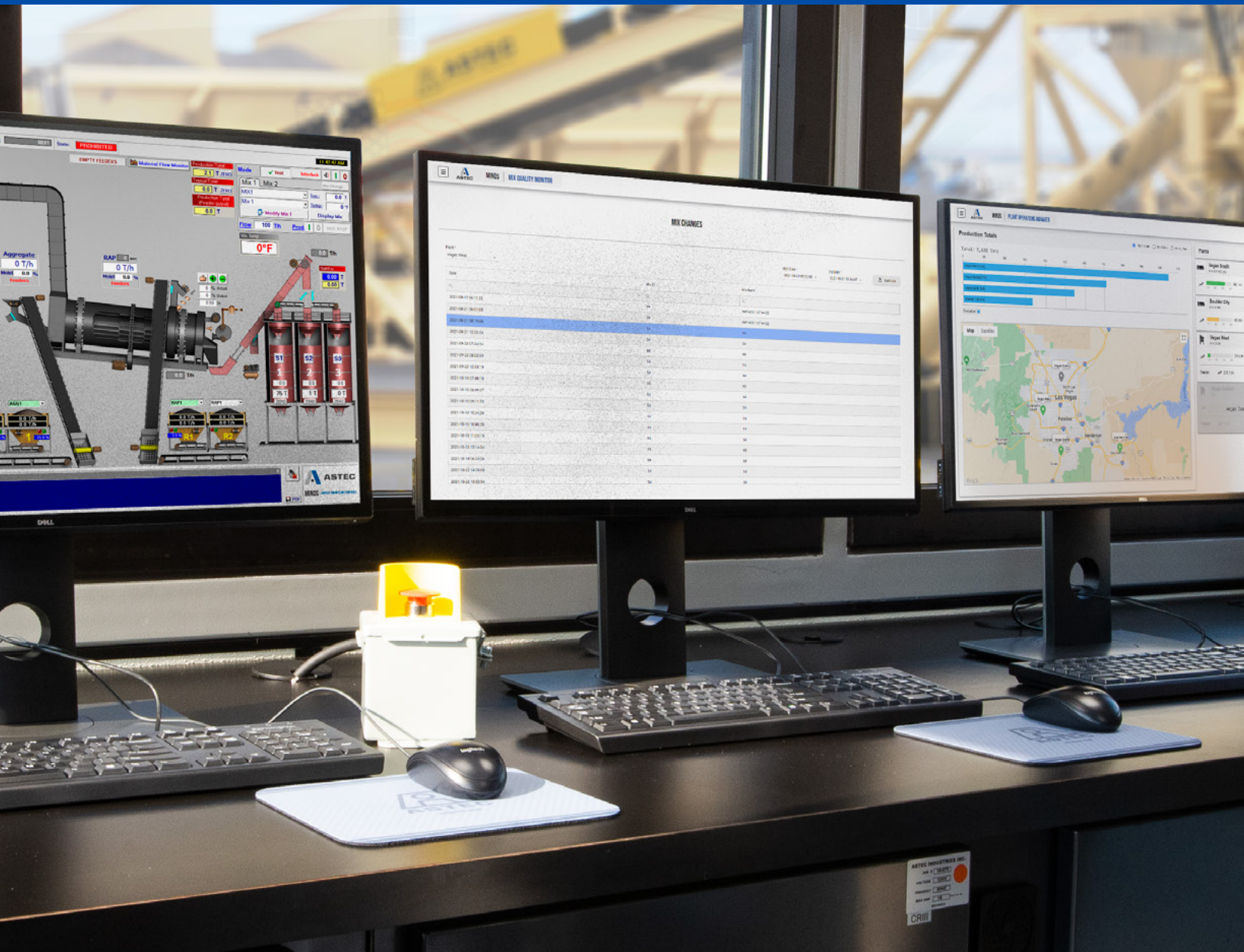
SILO INSPECTION SERVICE



Highlights:

- Robotic inspection can access hard-to-reach areas
- Inspections are quick and can be performed at night to prevent conflicts with production schedules
- Inspections do not require personnel to enter a confined space, making it the safest available method

MINDS | DATA SUITE



BUILT TO CONNECT

MINDS

CONTACT INFORMATION

United States

ASTEC DIGITAL – CHATTANOOGA

4101 Jerome Ave, Chattanooga, TN 37407

Canada

ASTEC DIGITAL - GRANBY

1013 Rue Miguel, Unit 101

Saint-Alphonse-de-Granby, QC J0E2A0 Canada”

ASTEC DIGITAL - KELOWNA

101 - 1658 Commerce Avenue, Kelowna, BC V1X 8A9, Canada

Europe

ASTEC DIGITAL - CAHORS

Z.I de la Crozette 180, rue MERMOZ

46090 Le Montat France

ASTEC DIGITAL - DUFFEL

Binnenweg 117 2570 Duffel Belgium

ASTEC DIGITAL - IPSWICH

Harkstead Hall Barns, Harkstead, Ipswich, Suffolk

IP9 1DB United Kingdom”

Indo-Pacific

ASTEC DIGITAL INDIA

301, Balaji Mall, Motera

Ahmedabad, GJ India 380005

ASTEC DIGITAL AUSTRALIA

Westridge Industrial Park

13/243 Bradman Street, Acacia Ridge QLD 4110

EMAIL

MINDS@ASTECINDUSTRIES.COM





ASTEC™

www.astecindustries.com