

ROADTEC SERIES HIGHWAY CLASS ASPHALT PAVERS



HIGHWAY CLASS ASPHALT PAVERS

Your work is specialized and you need a paver that fits your needs. The Roadtec series of highway class asphalt pavers gives you the flexibility to choose the paver that is right for you.

Our dependable and productive machines are ideal for a variety of applications and job sizes. Available in multiple configurations; wheeled or tracked, 8- or 10-foot and 173-230 hp options, there is a paver for every operation.

Our 8-foot wide wheeled and track pavers are designed for increased maneuverability without sacrificing performance. While the 10-foot pavers can tackle large jobs like highway and interstate work.

The Roadtec paver line works efficiently and effectively in a variety of sub-grades and is designed and manufactured with productivity and safety in mind.

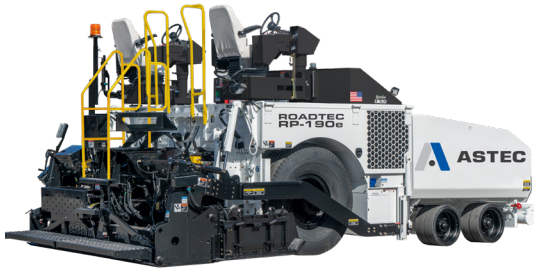




RP-170 | 8-foot Wheeled



RP-175 | 8-foot Tracked



RP-190 | 10-foot Wheeled



RP-195 | 10-foot Tracked





PAVER CONSTRUCTION



Solid Construction

All RP pavers begin with a durable, single-piece steel frame that is completely fabricated, welded and assembled by Astec. A 2-inch-thick (5 cm) front bumper plate connects two continuous side sheets that run the entire length of the frame. This custom craftsmanship yields a strong and rugged machine.

Durable Hydraulics

RP pavers are equipped with heavy-duty hydraulic pumps that propel the paver and material feed. These long-lasting pumps allow the entire hydraulic circuit to run extremely cool, prolonging the longevity and productivity of equipment components. The hydraulic system on the newly-redesigned RP-175 and RP-195 pavers has a reduced number of connection points for easier maintenance and improved uptime.

Intuitive Controls

Our pavers are specifically designed to enhance your crew's experience. Key functions are at their fingertips and easy-to-read touchscreens are accessible from both the operator station and the screed.

Efficient Cooling

The RP-175 and RP-195 tracked pavers feature a dual cooler system, which moves air to the top of the machine, blowing away from the operator and the ground crew. The RP-170 and RP-190 wheeled pavers have a cooling package mounted on the side of the paver for the cleanest and coolest air. The variable speed hydraulic fan runs at the optimal speed for the load, reducing noise levels.

CONFIGURATIONS



Refined Track Frame

The RP-195 and RP-175 track pavers feature a simplified, solid casting frame design. This design has been refined to a two-piece assembly for improved performance, increased durability, easier maintenance and increased life cycle. Track systems provide a smooth ride with excellent flotation and traction. The smooth-tread rubber tracks are 16 inches wide, providing one of the largest footprints available.



Rubber Tires

The RP-190 and RP-170 rubber tire pavers have great maneuverability, ride quality and traction. Two large rear drive tires are steered by two tandem bogie assemblies, and the two offset bogie assemblies increase the ground pressure gradually. Hydraulic braking and a parking brake are standard.

COOLING & NOISE REDUCTION

The RP-175 and RP-195 track pavers offer lower sound levels for a quieter operation and improved communication among your crew.



Noise Reduction

Operators of the RP-175 and RP-195 experience a quieter operation. The generator on these track pavers has been relocated from the screed to the engine compartment, and the cooling system has been relocated from the engine compartment to the top of the machine. This relocation of these key systems result in a quieter work environment with reduced noise and improved communication, safety and efficiency.

The sound has been reduced and balanced for crews and operators, providing a more efficient work atmosphere for paving crews in the field.

- 20% quieter operator station
- 10% quieter screed station
- 20% less sound output in the area surrounding the tractor



Optimized Airflow

The newly configured, dual-fan cooling system of the RP-175 and RP-195 allows air to flow in the sides and out the top toward the hopper for optimized airflow. This dual-fan system provides hydraulic cooling efficiency and improved operator comfort.



1 Clear View of the Front Hopper

The operator has a clear, unobstructed view into the front hopper, maximizing productivity and safety.

2 Direct Auger Visibility

The operator can see 360 degrees around the machine and has a full view of the screed, augers and material tunnel.

OPERATOR COMFORT AND PRODUCTION

With reduced noise levels and improved visibility, the Roadtec line of highway class pavers allows operators to stay in constant visual and audible communication while working in a comfortable and safe environment.

- All control functions are easily accessible, including feed system and flow gate controls.
- Emergency shut-off switches are found at ground level on both screed boxes and at the main operator stations for the safety of the entire crew.



Comfortable and Intuitive Controls

Ergonomic seating puts all the key functions at your fingertips, whether you are left- or right-handed. Touchscreens are easily accessible and visible to monitor operations and daily production levels. There is also a convenient USB charging port.

Swing-Out Operator Stations

Adjustable operator seats are equipped with suspension for added comfort and safety. Hydraulic, swing-out operator stations feature seats that move beyond the sides of the machine for a clear view down the sides of the paver.

KEY FEATURES



1 Industry Leading Screeds

Each paver has the option of three screed versions, with a variety of extension options. Screeds are heated electrically and thermostat controlled.

2 Comfort Drive™ Dual Operator Stations

Modern design and controls offer an upgraded operator experience. Controls have intuitive switches, joysticks and touchscreens, each one designed to put all the control at your fingertips.

3 Optimal Operator Visibility

Operator seats hydraulically swing out past the side of the machine for an unobstructed view, including increased visibility down the side of the paver.

4 Refined Undercarriage

A simplified, solid-casting track frame system has been refined to a two-piece assembly for improved performance, increased durability, easier maintenance and increased life cycle.



5 Quieter Operation

Noise has been significantly reduced by moving the generator from the screed to the engine compartment and relocating the cooling system on the RP-175 and RP-195.

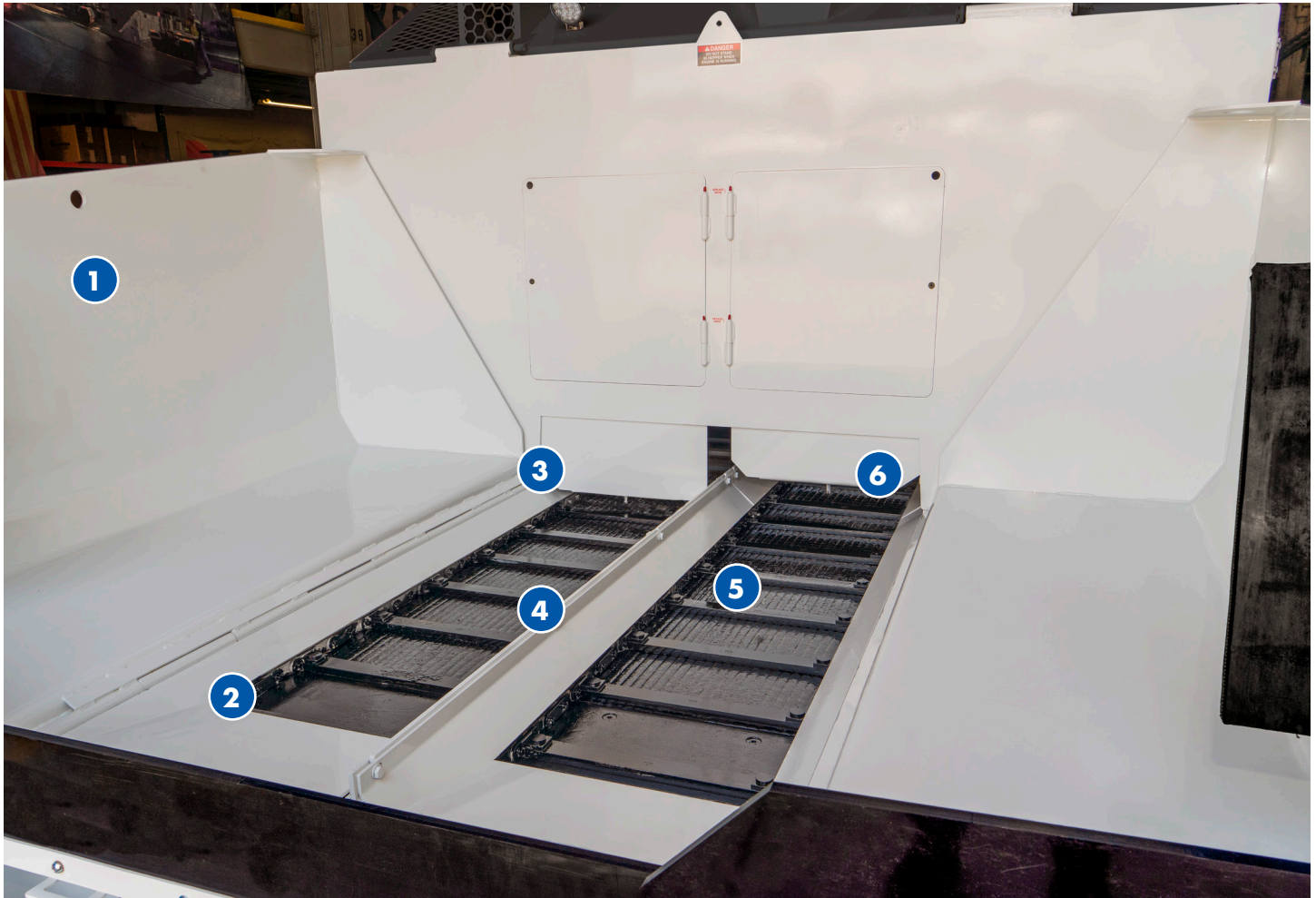
6 Unparalleled Material Handling

Unparalleled material handling provides best-in-class production throughput and material flow.

7 Cooler Air Flow

The newly configured, dual fan cooling system on the RP-175 and RP-195 significantly improves air flow within the operating system, while maintaining optimal operator visibility.

MATERIAL FLOW



1 Purposeful Hopper Shape

The corners of the hopper are engineered to reduce material adhesion and cold spots.

2 Short Front Apron

The short apron length prevents build-up of cold material and reduces segregation.

3 Electric Flow Gates

Pavers feature electric flow gates that are simple to operate and give precise control over the head of material. These flow gates allow material to be distributed properly without burying the auger and flooding the middle. Flow gate positions are displayed on every control box screen.

4 Conveyor Chain Guards

The chain guards are engineered to create a separation between the left and right conveyors, allowing more precise feeding of material to the augers and reducing segregation.

5 Independently-Driven Conveyors & Augers

Conveyors are independently driven, so material delivery can be fine-tuned for each side. Each conveyor is outfitted with its own feeder, facilitating increased material control. Each rear auger and conveyor are driven by their own hydraulic motor. Conveyors can be wider and closer together, and each side can run independently. Mix is conveyed out as one uniform flow for reduced segregation.

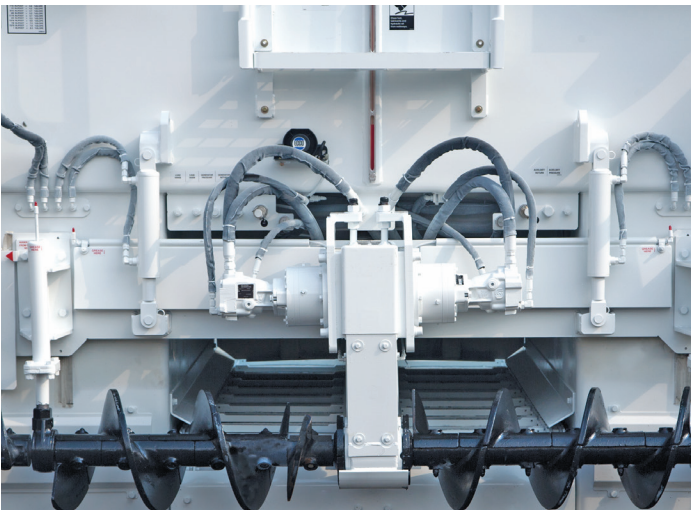
6 14-Inch-High Conveyor Opening

Each conveyor has a 14-inch-high opening to maximize throughput while maintaining consistency and control.



Heavy-Duty Delta Plate

The delta plate defines the front wall of the material tunnel, preventing mix from rolling forward under the paver, a main cause of centerline segregation. The delta plate also removes mix from the conveyors for greater efficiency.



Position of Augers

The auger drive box is kept as narrow as possible to prevent centerline segregation. Outboard auger supports are well-protected with ni-hard covers and temperature resistant bushings. The augers are kept particularly close to the discharge of the conveyors so that material is always in motion, not simply dumped on the ground.



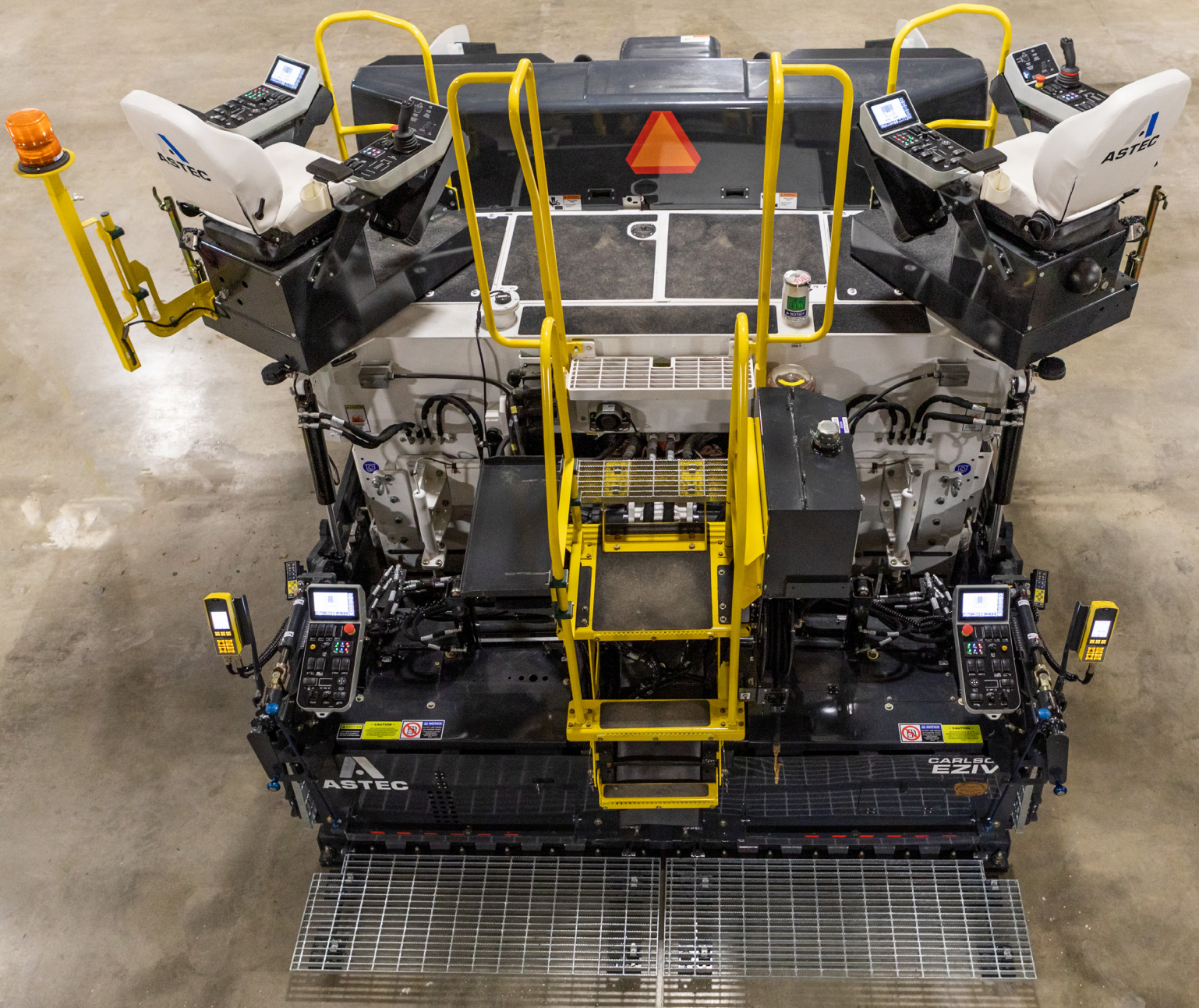
Hydraulically-Controlled Auger Assembly

The auger assembly can be hydraulically raised, lowered and tilted. This feature helps eliminate segregation in certain mixes and is beneficial during the load and unload process, as well as when constructing "supers".

MAXIMIZED UPTIME

Preventative maintenance is vital, and with the Roadtec paver line it doesn't have to be costly or time consuming. All maintenance and inspection areas are easily reached through access doors. You can perform daily maintenance checks quickly, safely and systematically.

- Innovative, lightweight composite hoods and doors on the RP-175 and RP-195 model make accessing maintenance areas convenient, with no need for hydraulics. One person can raise the hood to access the engine area.
- The RP-170 and RP-190 feature hydraulically-raisable engine hoods for access to the engine compartment.
- A roomy engine compartment makes component access and overall serviceability more convenient.
- The hydraulic oil tank is reached by a hinged access door on the operator platform.





Simplified Maintenance

Maintenance and inspection areas are located through large access doors on the side and top deck of the pavers.



Accessible Touchscreen

Touchscreens are accessible and visible from the operator station.



Streamlined Hydraulics

The streamlined hydraulic system has significantly fewer connection points, reducing maintenance needs and minimizing opportunities for leaks.



Clear Electrical Access

The electrical box is easily accessed from the ground. Circuit breakers allow for corrections without the use of tools.

SCREEDS

Better Screeds Build Better Roads

When it comes to mat quality, the Carlson line sets the industry standard with award-winning screeds. Our screeds are rugged and functional, yet simple to operate and maintain. Paving professionals are able to customize their paver with the screed that fits their specific application. All screed models are heated electrically and thermostat-controlled for simple use. Each Astec paver has the option of three screed versions, in 8 ft (2.5 m) and 10 ft (3 m) widths, with a variety of extension options. Screeds can be operated with single or dual grade control mode, grade and slope control or manually.

Front mount

These lighter screeds make for a versatile, high-performance finisher. The paving width is easily adjusted by extending extra screed plates forward of the main screed. These extensions are typically a shorter length than the main screed plate in order to make a more compact machine.

Rear mount

The heavier weight of these screeds makes them exceptional at compacting material. To adjust the paving width, simply extend screed plates that trail the main screed. These rear-mounted extensions are typically the same length as the main plate to maintain the same angle of attack.

Fixed width

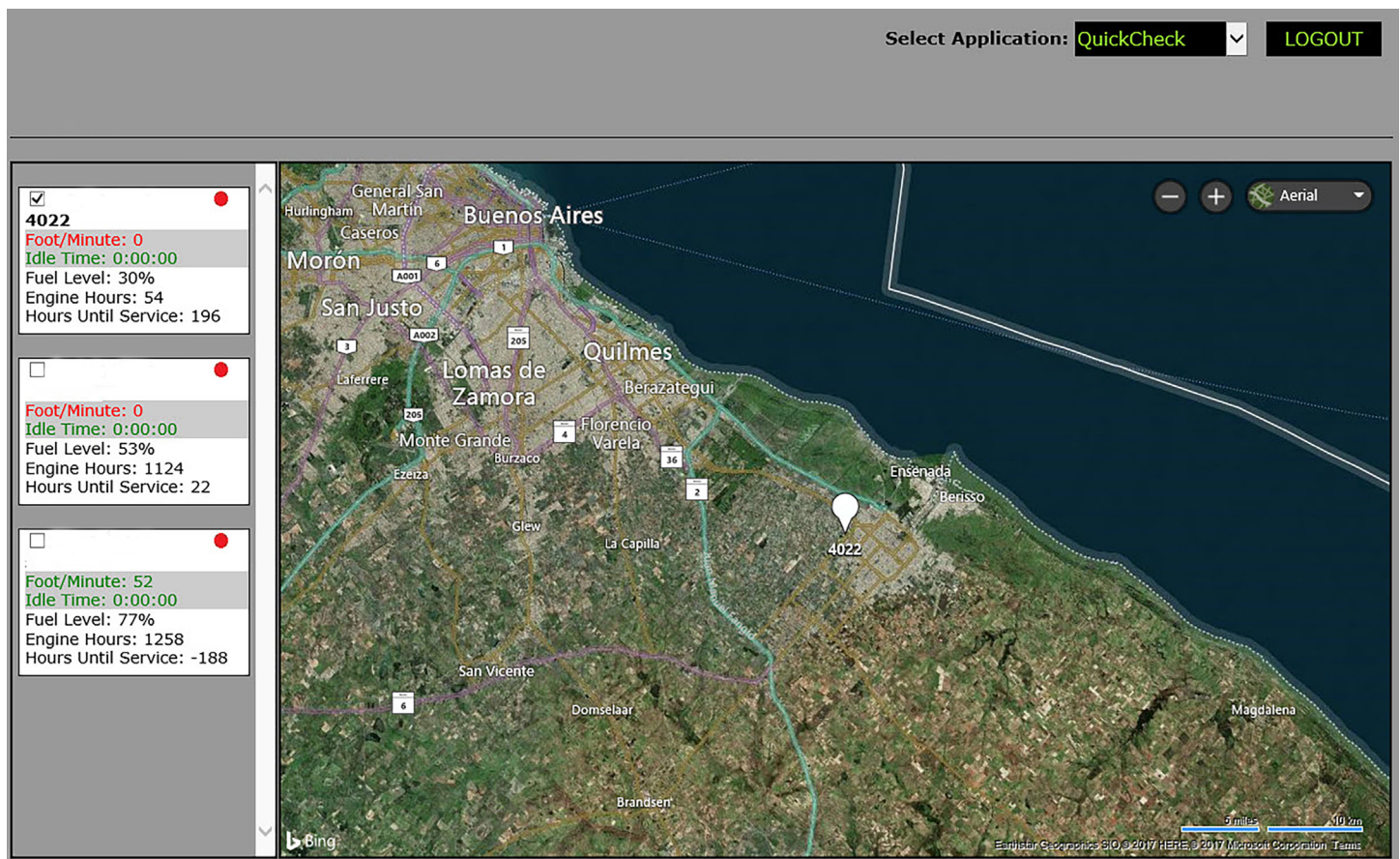
Fixed width screeds are simple and reliable for long, consistent pulls that do not require changing width on the fly. The width is set by a single screed plate. The hydraulically-extendable strike-offs provide flexibility for driveways and pull-offs.



TELEMATICS

Protect your investment and keep operating costs low by monitoring your machines in real time with the Guardian® telematics system. This system includes software, on-machine viewing screens and wireless signal boosters to send and receive data from anywhere at anytime.

Guardian provides the data you need to make changes in real time to mitigate risks and increase profits. Guardian's intuitive Live Schematics™ lets owners and technicians view electrical circuits in a simple, efficient layout with live status of switches, valves and settings.



OPTIONS

Paver Equipment Options

- Front wheel assist
- Hydraulic screed assist
- Hydraulic screed boost
- 24 V LED night light package
- SaberLight™ high intensity light panels
- Airstar balloon lights
- Laser pointer alignment guide
- Truck drum signal light
- Amber beacon
- Ni-Hard auger extensions
- Tunnel extensions (bolt-on & hydraulic)
- 6 ft, 16 ft and 20.5 ft tunnel & auger extension packages
- Guardian® telematics system
- Electrical outlets
- Truck hitch
- Automated lubrication system
- Reversing distribution augers (with or without auger bypass)
- Operator feed override of screed
- Auger plow kit
- Umbrella kit
- Environmental release agent spray down system
- Stiff wall tire option
- Soft rubber front flashing
- Mass flow hopper inserts & insert extensions
- TOPCON grade & slope control system
- MOBA grade & slope system

Screed Equipment Options

- Hydraulic & bolt-on berm extensions
- Heated endgates
- Heated safety edge endgate shoe
- Cut-off shoe
- Heated sideload attachment
- High density bolt-on
- Tapered notch (beveled edger)
- Tapered notch heavy compaction sled
- Wide width support kit (pre-strikeoffs & supports)
- Wide width heated bolt-ons



SPECIFICATIONS



RP-170 (8-foot) Wheeled

Detail	Spec
Weight	29,280 lb (13,344 kg)
Hopper	11.5 tons (10.4 tonnes)
Travel Speed	0 - 10 mph (16 k/hr)
Paving Speed	0 - 300 fpm (91 m/min)
Tires	Hydroflated high flotation 16.00-24 sand rib drive tires

RP-175 (8-foot) Tracked

Detail	Spec
Weight	32,500 lb (14,741 kg)
Hopper	10 Tons (9 tonnes)
Travel Speed	0 - 6.5 mph (10.5 k/hr)
Paving Speed	0 - 210 fpm (64 m/min)
Tracks	16 in (406 mm) wide, smooth tread rubber track

RP-190 (10-foot) Wheeled

Detail	Spec
Weight	36,700 lb (16,646 kg)
Hopper	13.8 tons (12.5 tonnes)
Travel Speed	0 - 12 mph (19 k/hr)
Paving Speed	0 - 284 fpm (86 m/min)
Tires	Hydroflated high flotation 18.00-25 sand rib drive tires

RP-195 (10-foot) Tracked

Detail	Spec
Weight	39,220 lb (17,789 kg)
Hopper	13.8 ton (12.5 tonnes)
Travel Speed	0 - 7.5 mph (12 km/hr)
Paving Speed	0 - 210 fpm (64 m/min)
Tracks	16 in (406 mm) wide, smooth tread rubber track



ASTECTM

www.astecindustries.com