

ROADTEC MATERIAL TRANSFER VEHICLES





ASTEC



ROADTEC
MTV-1102e

DO NOT PUSH

BUILT TO CONNECT

Astec Industries' Roadtec Material Transfer Vehicles provide the industry-leading material transfer solution for highways, interstates, and more.

The Roadtec brand has been an integral member of the Astec Industries family since 1981. By aligning all Astec brands, we harness the power of a comprehensive dealer network, expansive parts distribution, and robust service.

Based in Chattanooga, Tennessee, Astec was founded in 1972 with the vision to supply creative thinking and state-of-the-art technologies to Rock to Road industries.

Today Astec manufactures more than 100 products in 25 facilities worldwide. Astec products include:

- Rock crushing plants.
- Screening plants.
- Hot mix asphalt facilities.
- Concrete plants.
- Asphalt pavers.
- Recycling solutions.
- Forestry solutions.

Astec is committed to placing the customer first. We focus on customer-driven innovation in everything we do. This approach informs how we design, build, and service our products.

As part of Astec Industries we are Built to Connect today, tomorrow, and in the future. This means that our products, services, and solutions connect communities. We design and develop innovative and sustainable industry-leading MTVs through collaboration, modernization, and teamwork. We are Built to Connect.



KEY FEATURES



1 Long Life Clad Wear Liners

The MTV's conveyor floor plates are clad to ensure a long life. Running hot mix asphalt all day, every day, can take a toll on weaker steels. Fortunately, with clad liners in these MTVs, it will be as if there is no wear at all. The floor pans stand up to material like never before.

2 Stress-Free Maintenance

Hydraulically operated clean-out doors on each conveyor make end-of-day cleaning easy and quick. Remote located grease points and fluid-fills are worked into stress-free routine maintenance.

3 Dual Operator Stations Joystick Controls

A single joystick controls all propel functions, direction, and speed for both the wheeled and tracked MTVs. Simple switches with carefully arranged layouts facilitate easy and smooth operation.

4 Maximum Visibility with Innovative Platform

The platform design creates open space for exceptional visibility all around the machine. The unobstructed view of the work area eliminates the need for a groundperson.



5 Staircase Accessibility

The MTV is equipped with an innovative staircase entrance, rather than a ladder. The staircase allows the crew to cross over the machine, and over the paving line, instead of moving between equipment.

6 Blend Consistently with Triple Pitch Augers

Placed in the front dump hopper, these augers work to blend materials where there is the largest selection available.

7 Quick Unloading

Optimized for mass discharge from standard haul trucks, the front hopper allows trucks to unload fast. A vibrating bottom plate in the hopper prevents material build-up.

NON-CONTACT PAVING

Easily Maneuver in Tight Work Spaces

Material Transfer Vehicles (MTVs)

The MTV-1100 and MTV-1105 material transfer vehicles allow simple entry into non-contact paving. These machines were designed from the ground up with a focus on comfort and productivity. Astec is known for durability and strength, and the wheeled MTV-1100 and the tracked MTV-1105 are no exception. While they are fabricated from heavy-duty steel, these MTVs are light enough to avoid weight permits for most transports. They are compact, easy to maneuver machines designed for customers who must work in spaces too tight for a Roadtec Shuttle Buggy® MTV. When it comes to durability, user-friendly systems, simple operation, and improved material handling, Astec MTVs are the machine to get the job done.





Boost Efficiency with Quick Unloading

Sized for mass discharge from standard haul trucks, the front hopper allows trucks to unload fast. A vibrating bottom plate in the hopper prevents material build-up. Heavy-duty, swiveling support casters under the hopper ensure smooth movement. Complete functionality of the dump hopper is easily controlled by the operator from the main operator platform, requiring fewer crew members and saving money.



Reduce Costs with Durable Parts Built to Last

Astec's MTVs are engineered for rugged work. Sturdy roller bushing chains are purposefully employed on specific conveyors to prolong machine life. Slats are crafted from abrasion-resistant steel, and thick wear plate linings are installed on the conveyor floors. Additionally, the HMA remains at the desired temperature, since the floor of the paver-loading conveyor is insulated against heat loss.



Blend Consistently with Triple Pitch Augers

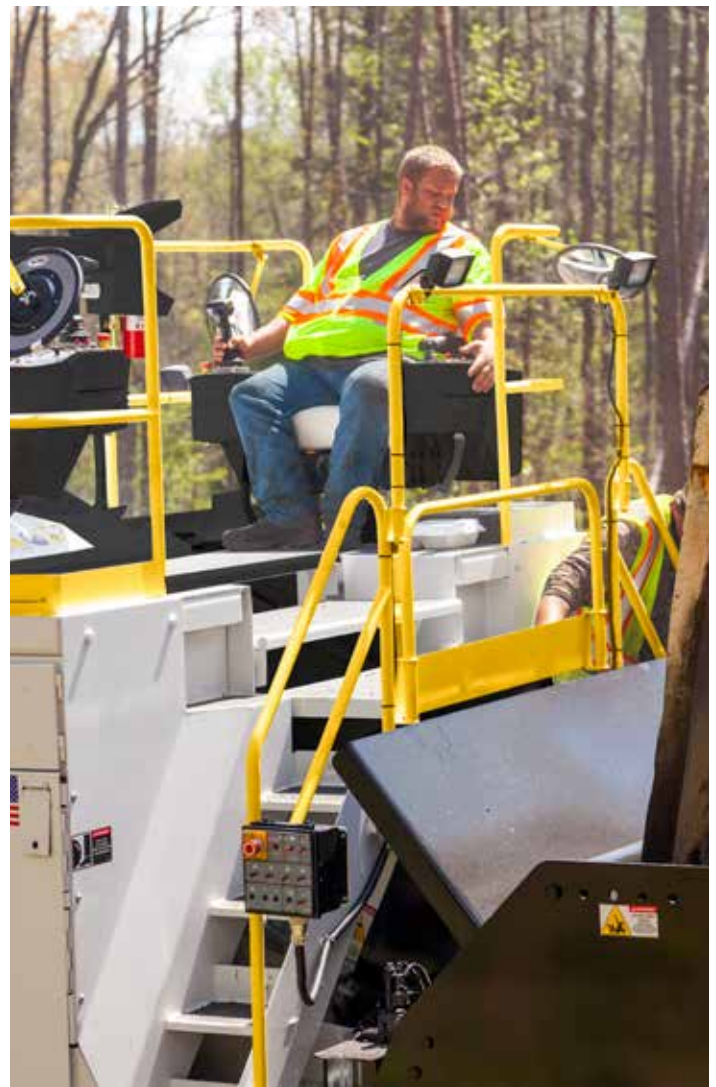
Triple pitch augers, placed in the front dump hopper, work to blend materials where there is the largest selection available. From there, the MTV uses standard slat-chain conveyors to carefully move material back to the paver.

OPERATOR STATION

Excellent Visibility, Safety, and Comfort

Enjoy Maximum Visibility with Innovative Platform

The inventive platform design for the MTV-1100 and MTV-1105 creates open space for exceptional visibility all around the machine. The unobstructed view of the work area eliminates the need for a groundperson. The lower vantage point also offers the best possible views.



Drive Comfortably with Single Joystick

A single joystick controls all propel functions, direction, and speed, for both the wheeled and tracked MTVs. Simple switches with carefully arranged layouts are easy to understand. Backlit panels make night jobs just as easy as day jobs. Switches are durable, long lasting, and create a tactile operation that allows users to keep their eyes on the road.

Improve Safety with Staircase Accessibility

The MTV has an innovative staircase entrance, instead of a ladder. The crew can use the staircase to cross over the machine, and over the paving line, instead of moving between equipment. This limits the risk of creating footprints in the mat, and creates a safer work environment. The staircase also makes it easy for the operator to communicate with those on the ground, improving safety and productivity.

American-Made Durability

The MTV-1100 and MTV-1105 begin with a solid, one-piece durable steel frame that is completely fabricated, welded, and assembled by Astec. This American-made custom craftsmanship yields a Material Transfer Vehicle that is rugged and durable.



Unlimited Stability

The MTV-1100 is equipped with rubber tires that offer optimal maneuverability without sacrificed performance. The wheels provide stability when paving and when transporting the machine off the road at the end of the shift.

Float on Any Base with Ease

The rubber band on the MTV-1105 track system is time tested and well established; it is identical to the Roadtec RP-195 tracked paver. The track system, as well as the pump and motors, are proven to handle heavy loads and tough conditions successfully. There's never a concern about slipping a wheel or leaving a rut since the tracks maneuver easily on soft bases.



Rest Assured with Stress-Free Maintenance

Hydraulically operated clean-out doors on each conveyor make end-of-day cleaning easy and quick. Remote located grease points and fluid-fills are worked into stress-free routine maintenance. The main electrical box and DEF tank, along with almost all other maintenance items, are easy to reach from the ground, and don't force your crew to open the hood or crawl on the ground for regular checks.

Long Life Clad Wear Liners

The conveyors on the MTV-1100 and MTV-1105 are built to last, providing peak performance and productivity. Since each conveyor is engineered for a specific job, they are customized for maximized performance. For example, the C1 is equipped with fully clad liners and offset chains for improved operation and durability. This ensures the highest durability, production and efficiency in your MTV.

MODELS

Protect your investment and keep operating costs low by monitoring your machines in real time through a wireless signal with the Guardian® Telematics System. Guardian is the industry's only live 2-way telematics system. Guardian includes software, on-machine viewing screens, and wireless signal boosters to send and receive data in real time from anywhere at anytime.

Guardian provides the data you need to make changes in real time to mitigate risks and increase profits. Guardian's intuitive Live Schematics™ lets owners and technicians view electrical circuits in a simple, efficient layout with real time status of switches, valves, and settings.





MTV-1100

Detail	Spec
Engine	Cummins® QSB 6.7 250 hp (186 kW) @ 2,200 rpm
Weight	47,890 lbs (21,722 kg)
Tracks	18 in (457 mm) Rubber Track
Conveyors	600 tph capacity



MTV-1105

Detail	Spec
Engine	Cummins® QSB 6.7 250 hp (186 kW) @ 2,200 rpm
Weight	53,520 (24,276 kg)
Tracks	Rock Lug - 17.5 in x 25 in
Conveyors	600 tph capacity

Options

Auxiliary Power and Lighting
4 kW continuous duty hydraulic generator
Truck dump signal light
Dump hopper landing lights
Road light package – six 24v road lights
Night light package

Miscellaneous
Automated lubrication system
Truck hitch instead of push rollers
Environmental agent spray-down system
Automated release agent spray down system
Tire spray system
Auto tracking package
Auto-feed hopper monitor



ASTECTM

www.astecindustries.com