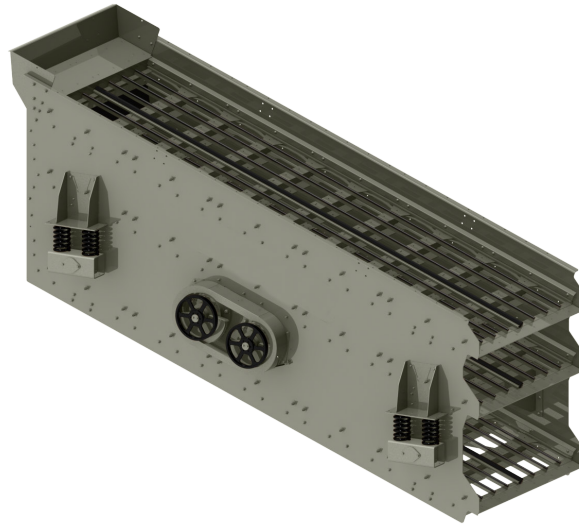


# VIBRO-KING TL®

## Incline Screen



### Screen Features

- 1/2" (no weld) sideplates (alternate 3/8")
- 20 degree mount angle
- Huck-bolted assembly
- Reinforcing plates at vibrator
- Bolt on AR lined feedbox, 6" AR lined discharge lips
- Backplate with rubber dust curtain
- Support pedestals and springs
- Lifting bars
- Steel coil springs
- Urethane friction checks with replaceable wear plates
- Applications from heavy duty scalping to finish screening (wet or dry)
- Standard wide series bearings deliver long service life: bearing sizes: TL26 (130mm bearings), TL32 (160mm bearings), TL40 (200mm bearings)
- Oil lubricated TL shaft assembly (single and dual shaft models)
  - Oversized shaft casing increases oil volume & extends service intervals
- "Never-Wear" sealing system:
  - Centrifugal force casts oil away
  - No contact seals to maintain
- Urethane labyrinth dust seal
- Best in-class serviceability
  - Splash plate to support shaft during assembly
  - Oil level sight gauge on non-drive side
  - Grease fittings located outside of guard
- External counterweights
- FEA design with extensive stress analysis
- Operation and maintenance manuals

### Deck Designs

- Side tension deck:
  - Designed for wire cloth (up to 1/2" dia. wire)
  - 5' & 6' wide screens utilize single crown hook up / hook up design
  - 7' & 8' wide screens utilize double crown hook up / hook down design
- Modular urethane deck:
  - Designed for mounting urethane panels of almost any style.
  - Fabricated with heavy J-Beams welded into formed channel side
- Heavy duty J-Beam deck:
  - Designed for mounting bolt-down punch plate or steel-backed rubber media

Feature	Specification
Adjustable stroke length (throw)*	Minimum 1/4" to 7/16"
Adjustable operating speed range	780 – 1050 RPM
Slope Range	14° - 20°
Maximum feed size**	10" - 18"
Maximum top deck opening	3" (wire cloth), / 6" (punch plate)
Minimum screen cloth opening	6 mesh – 3/32"
Sideplate thickness	5' & 6' – 3/8" *** / 7' & 8' – 1/2"
Reinforcing plate thickness	3/8" (3/8" sideplate) / 1/4" (1/2" sideplate)
Feed box liner thickness (AR400 Plate)	3/8"
Discharge lip length	6"
Discharge lip liner (AR400) thickness	3/8"

\* For dry 100lb per cubic foot material and shaft rotating with the flow

\*\* Maximum feed size will vary based on deck design, media selection, and feed height

\*\*\* Plate thickness based on duty and application

Model	Decks	Shafts	Width ft / mm		Length ft / mm		Power Required HP / kW		Weight* lb / kg		Bearing Size mm
5122-26	2	1	5	1,520	12	3,660	25	19	***		130
5122-32	2	1	5	1,520	12	3,660	25	19	***		160
5123-26	3	1	5	1,520	12	3,660	25	19	***		130
5123-32	3	1	5	1,520	12	3,660	25	19	***		160
5162-26	2	1	5	1,520	16	4,880	25	19	13,455	6,103	130
5162-32	2	1	5	1,520	16	4,880	25	19	14,084	6,388	160
5163-26	3	1	5	1,520	16	4,880	30	22	17,009	7,715	130
5163-32	3	1	5	1,520	16	4,880	30	22	17,638	8,000	160
5164-32	4	1	5	1,520	16	4,880	40	30	21,192	9,613	160
6162-26	2	1	6	1,830	16	4,880	25	19	14,863	6,742	130
6162-26-2	2	2	6	1,830	16	4,880	20x2	15x2	18,094	8,207	130
6162-32	2	1	6	1,830	16	4,880	30	22	14,863	6,742	160
6163-26	3	1	6	1,830	16	4,880	30	22	19,573	8,878	130
6163-26-2	3	2	6	1,830	16	4,880	20x2	15x2	22,804	10,344	130
6163-32	3	1	6	1,830	16	4,880	40	30	19,573	8,878	160
6164-26-2	4	2	6	1,830	16	4,880	30x2	22x2	25,662	11,640	130
6164-32	4	1	6	1,830	16	4,880	40	30	22,848	10,364	160
6164-32-2	4	2	6	1,830	16	4,880	40x2	30x2	26,307	11,933	160
6202-26	2	1	6	1,830	20	6,100	30	22	17,439	7,910	130
6202-26-2	2	2	6	1,830	20	6,100	20x2	15x2	20,670	9,376	130
6202-32	2	1	6	1,830	20	6,100	40	30	17,856	8,099	160
6202-32-2	2	2	6	1,830	20	6,100	20x2	15x2	21,315	9,668	160
6203-26-2	3	2	6	1,830	20	6,100	25x2	19x2	25,617	11,620	130
6203-32	3	1	6	1,830	20	6,100	40	30	22,728	10,309	160
6203-32-2	3	2	6	1,830	20	6,100	25x2	19x2	26,187	11,878	160
6204-26-2	4	2	6	1,830	20	6,100	30x2	22x2	29,220	13,254	130
6204-32-2	4	2	6	1,830	20	6,100	40x2	30x2	29,865	13,547	160
7202-26-2	2	2	7	2,130	20	6,100	20x2	15x2	26,410	11,979	130
7202-32	2	1	7	2,130	20	6,100	40	30	23,598	10,704	160
7202-32-2	2	2	7	2,130	20	6,100	25x2	19x2	27,021	12,257	160
7202-40	2	1	7	2,130	20	6,100	40	30	23,598	10,704	200
7203-26-2	3	2	7	2,130	20	6,100	25x2	19x2	33,384	15,143	130
7203-32	3	1	7	2,130	20	6,100	40	30	30,574	13,868	160
7203-32-2	3	2	7	2,130	20	6,100	30x2	22x2	33,997	15,421	160
7203-40	3	1	7	2,130	20	6,100	40	30	31,305	14,200	200
7204-26-2	4	2	7	2,130	20	6,100	30x2	22x2	40,358	18,306	130
7204-32-2	4	2	7	2,130	20	6,100	40x2	30x2	40,969	18,583	160
8202-26-2	2	2	8	2,430	20	6,100	25x2	19x2	28,363	12,865	130
8202-32	2	1	8	2,430	20	6,100	40	30	25,056	11,365	160
8202-40	2	1	8	2,430	20	6,100	40	30	25,056	11,365	200
8203-26-2	3	2	8	2,430	20	6,100	30x2	22x2	33,166	15,044	130
8203-40	3	1	8	2,430	20	6,100	50	37	31,392	14,239	200
8204-26-2	4	2	8	2,430	20	6,100	30x2	22x2	38,311	17,378	130
8204-32-2	4	2	8	2,430	20	6,100	40x2	30x2	38,997	17,689	160
8242-26-2	2	2	8	2,430	24	7,320	25x2	19x2	28,102	12,747	130
8242-40	2	1	8	2,430	24	7,320	50	37	26,328	11,942	200
8244-32-2	4	2	8	2,430	24	7,320	40x2	30x2	49,855	22,614	160

\*Weights are approximate and include wire cloth. All weights shown are estimated and may vary due to fabrication variables, optional equipment or custom engineering.

\*\*\* Consult Factory for weight