

ROADTEC STABILIZERS/RECLAIMERS





WARNING
THIS MACHINE MAY
LUNGE BACKWARD,
REAR END COULD
RUBBY IN PERSONAL
STRAY OR DEATH.
STAY AT LEAST
20 FEET CLEAR
OF THE AREA
BEHIND THE MACHINE.

WARNING
THIS MACHINE MAY
LUNGE BACKWARD,
REAR END COULD
RUBBY IN PERSONAL
STRAY OR DEATH.
STAY AT LEAST
20 FEET CLEAR
OF THE AREA
BEHIND THE MACHINE.



ROCK TO ROAD®

Roadtec stabilizers/reclaimers by Astec provide industry-leading road reclamation and soil stabilization for highways, interstates, and more.

The Roadtec brand is an integral component of the comprehensive line of Rock to Road solutions produced by Astec Industries. By aligning all Astec brands, we harness the power of a comprehensive dealer network, expansive parts distribution, and robust service.

Founded with a vision to supply creative thinking and state-of-the-art technologies to Rock to Road industries, Astec has been leading the way for over a half a century.

Today Astec manufactures more than 100 products in 25 facilities worldwide. Astec products include:

- Rock crushing plants.
- Screening plants.
- Hot mix asphalt facilities.
- Concrete plants.
- Asphalt pavers.
- Recycling solutions.
- Forestry solutions.

Astec is committed to placing the customer first. We focus on customer-driven innovation in everything we do. This approach informs how we design, build, and service our products.

Astec continues to lead innovation in the industry by offering the world's most comprehensive global product portfolio from Rock to Road®. We have a proven reputation driven by our five core values: safety, devotion, integrity, respect, and innovation. Customers can rely on Astec to provide high-quality equipment that will get the job done.

HIGH-PRODUCTIVITY SX SERIES MACHINES

Astec SX series machines are heavy-duty self-propelled units used for two distinct applications: Soil Stabilization and Asphalt Reclamation.

Astec stabilizers/reclaimers are dependable and productive machines that work efficiently in multiple applications and job sizes. Equipped with a high performance 6-cylinder diesel engine that provides power to the rotor through a direct drum drive, the stabilizers/reclaimers have the power and functionality your job requires. With a range of horsepower from 675 to 755 horsepower, you are certain to find the stabilizer/reclaimer that is up to your job.

- With a clean-running 675 hp (503 kW) Cummins® QSX-15 engine, the mid-size SX-6 offers a rare combination of power and mobility allowing it to excel in different applications.
- The SX-8e soil Stabilizers/Reclaimers feature a clean-running 755 hp (563 kW) CAT® C18 engine. It is the largest, most powerful model in the Astec line of stabilizers-reclaimers.



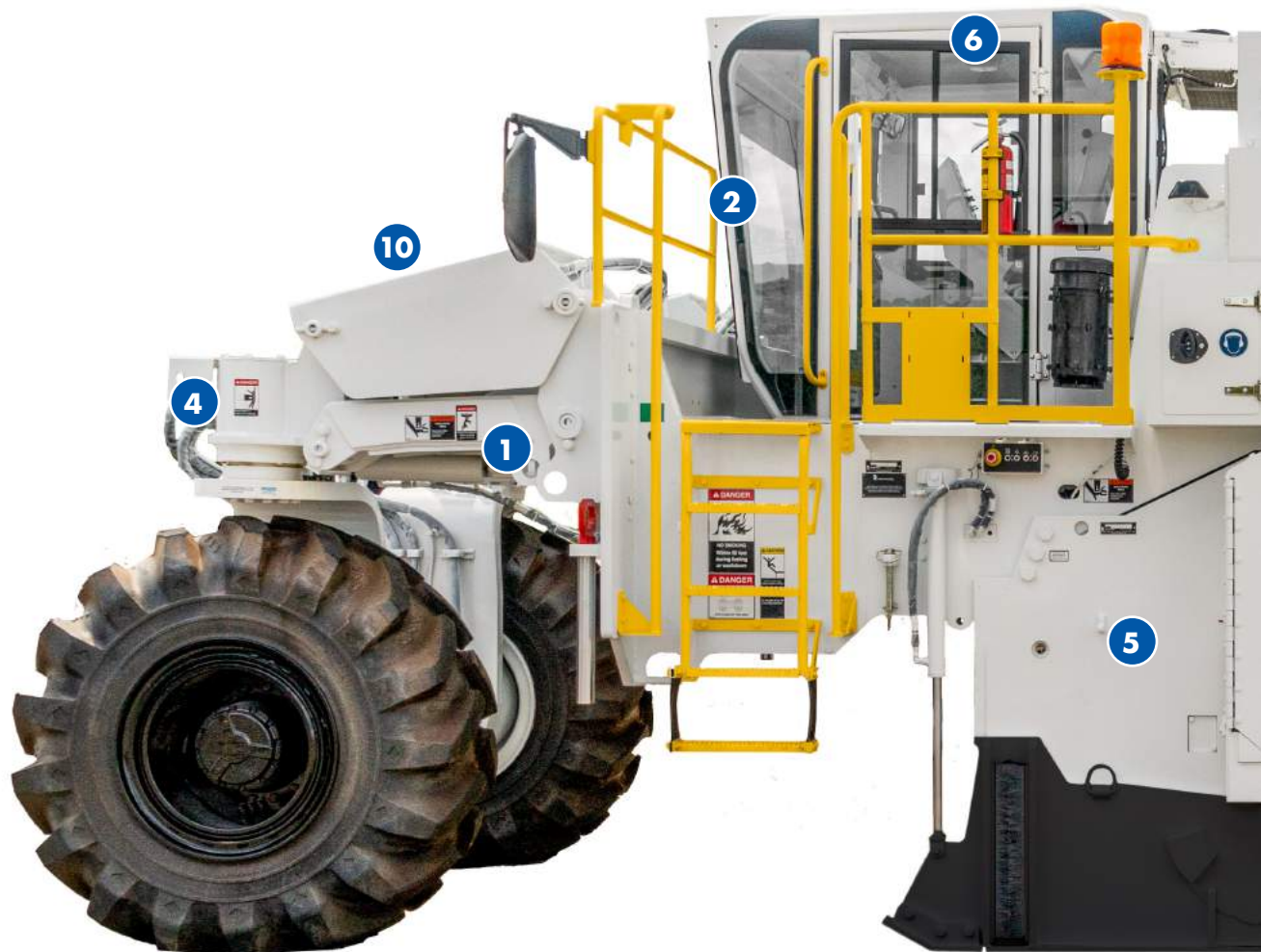
Heavy-Duty Engine, Balanced Weight, and Lighter Frame

Four cutting speeds and right-hand flush cut make the SX series the ideal choice for a range of projects including stabilizing or cold recycling. An industry-exclusive air-shift transmission permits the operator to shift the rpms on the cutter drum to suit the specific application.

- Hydraulically-controlled suspension enables the depth of cut to be selected via push button.
- A sealed, strong, durable box frame provides controlled air flow while maintaining durability.
- Fully-enclosed operator compartment (with heat and air conditioning) shifts 18 inches to the right of center.
- Operator seat slides laterally and swings 90 degrees for increased visibility.
- Rear-mounted camera provides full visibility and safety when backing up.



KEY FEATURES



1 4-Wheel Drive Propel System

The 4-wheel drive propel system on all SX models delivers 100% traction control to perform consistently in the most challenging environments.

2 Bi-directional Travel

The SX-6 and SX-8 can cut while moving forward or backward. There is no need to turn the machine around. With a simple toggle switch, you can move forward or reverse, and continue to cut in either direction, saving time and money.

3 Optimal Airflow

The SX series has an efficient cooling system that pulls air from the top of the machine, where it is cleanest. The air is exhausted through the rear radiator packs, eliminating debris entering the engine or causing corrosion.

4 Water Emulsion Additive System

Simple controls easily control and monitor additive system parameters, such as flow intensity and spray nozzle activation.



5 Variety of Drums to Fit Specific Applications

Astec offers a variety of drums specifically designed to fit your particular application. Soil stabilization drums are designed to provide the most productive result while maximizing the machine's horsepower. Reclamation drums are engineered to work in demanding environments and provide the best gradation for the job at hand.

6 Extendable, Sealed and Pressurized Cabin

The operator cabin extends up to 18 inches past the right side of the machine, allowing the operator to have full visibility, without sacrificing comfort or ergonomics.

7 4-Speed Transmission

Four-speed cutter transmission achieves the highest levels of production at each drum rpm. Rather than altering the engine rpm to modify drum speed, the transmission allows the machine to operate at peak power output at four different selectable drum speeds.

POWER WITH MOBILITY

SX stabilizers/reclaimers are capable of cutting up to 20 inches (508 mm) deep and 100 inches (2,540 mm) wide. Whether performing road rehabilitation, cold recycling, or soil stabilization, the Astec SX series will meet and exceed your expectations.

The high-performance SX-8 soil stabilizer-reclaimer combines power with a large working width and depth, making it ideal for the toughest soil stabilization jobs. The SX-8 features a clean-running 755 hp (563 kW) CAT® C18 engine that provides power to the rotor through a direct drum drive.

With a clean-running 675 hp (503 kW) Cummins® QSX-15 engine, the mid-size SX-6 offers a rare combination of power and mobility allowing it to excel in different applications. The SX-6 is equipped with a high performance 6-cylinder diesel engine that provides power to the rotor through a direct drum drive.



Strong Frame

The durable frames of the SX series are manufactured from extremely strong A656 grade 80 steel. This steel has twice the yield strength as the mild steel used in other machines on the market. The custom-made frame is designed to perform in all terrains by providing substantial ground clearance.

Hydraulic Suspension

The wheels are suspended by four independently-controlled, hydraulically-adjustable leg assemblies that are bolted to the frame. This feature allows the depth of cut to be selected via push button. The cutter housing is also securely fastened to the frame, providing strength and precision.

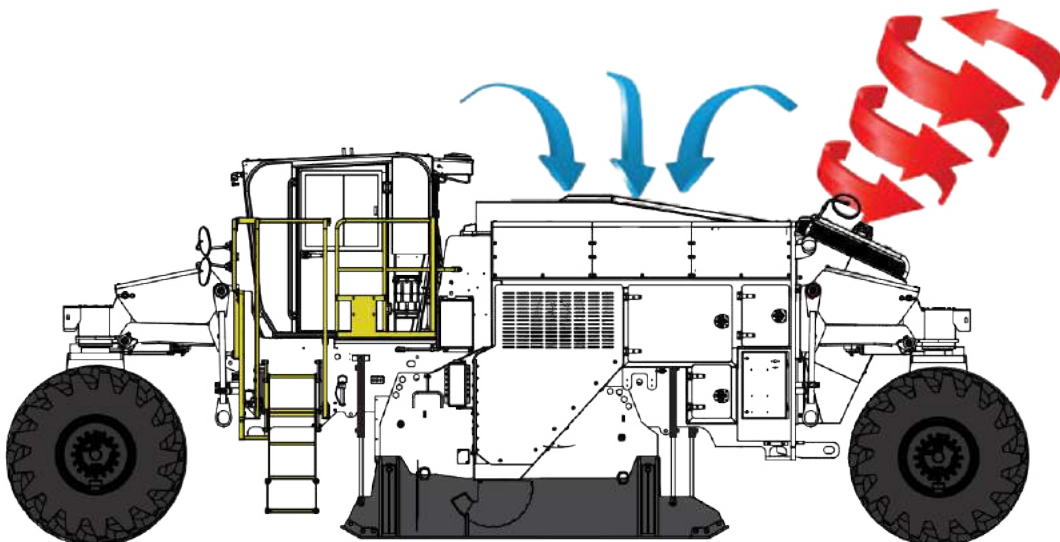


Weight Balance & Power Allocation

Weight balance and power allocation are critical in all stabilization and reclamation applications. The weight of Astec stabilizers/reclaimers is perfectly distributed between the two axles, allowing the machine's horsepower to be applied as efficiently as possible with maximum tractive effort. Four individual drive pumps deliver 100% traction control. With ideal weight placement and balanced four-wheel drive, the machine is better equipped to consistently perform in the most difficult project environments.

Powerful & Efficient Cooling

The cooling system introduces air from the top of the machine at the cleanest possible area, before it is exhausted away from the machine and engine through the rear radiator package. By pulling air from the top of the machine, the amount of dust traveling through the cooling system is limited. Clean-out panels provide convenient access for radiator maintenance. A variable-speed fan also provides efficient cooling based on engine demand.



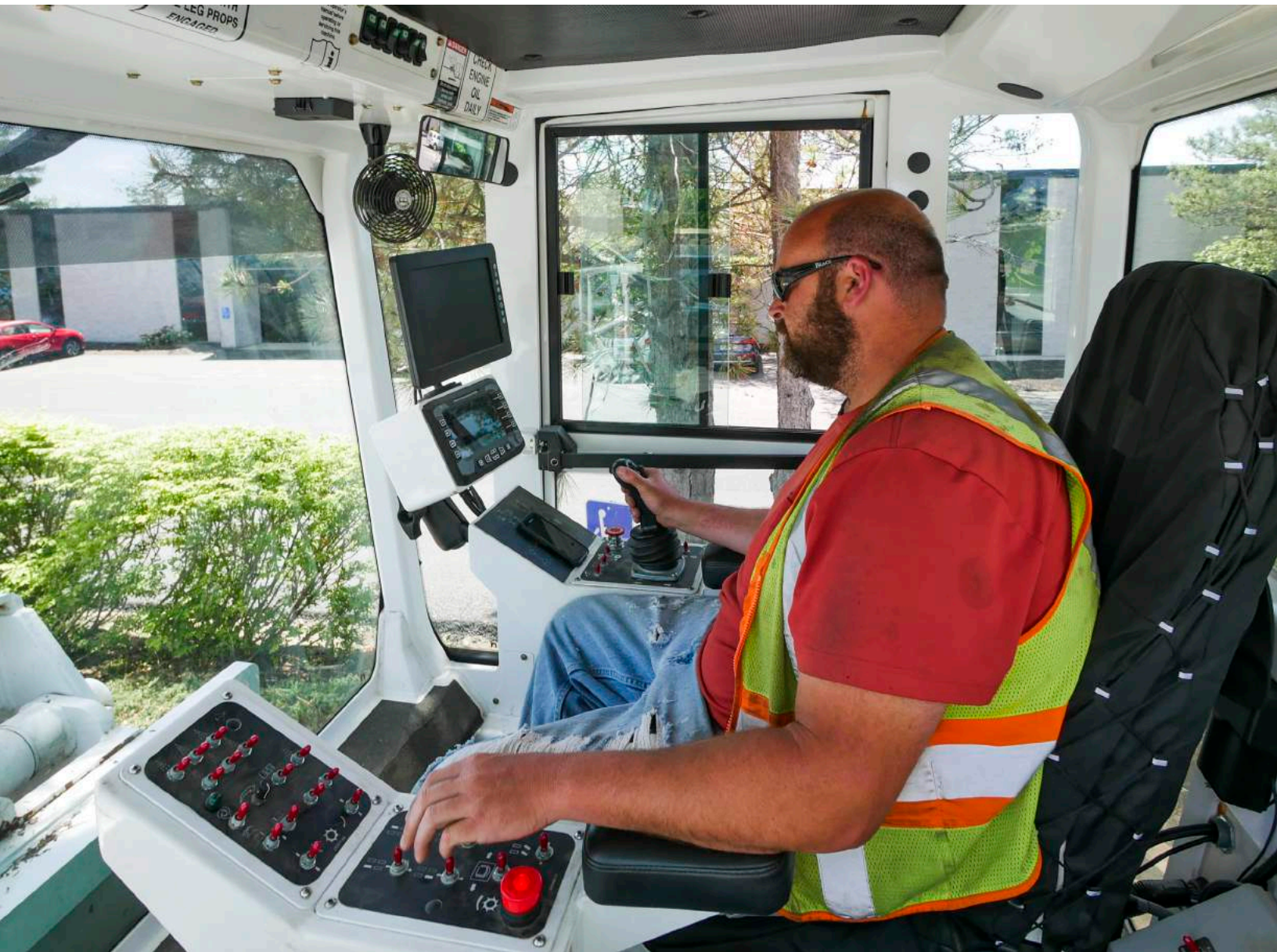
OPERATOR COMFORT

Visibility & Operator Station

Designed for visibility and ease of operation, the operator's seat slides laterally and swings 90 degrees to help create the perfect vantage point from which to work. The platform also slides 18 inches past the right of the machine for additional visibility. A full view cab gives the operator an excellent view of the cutting edge and any obstacles that may be in the way. Mirrors on both sides provide the operator with additional viewpoints of the machine's surroundings.

Standard Backup Camera

A backup camera system provides additional visibility while the machine is operated in reverse. A screen inside the cab conveniently displays the area directly behind the stabilizer as soon as reverse is selected. The backup camera adds a level of comfort and convenience when navigating around other machines and obstacles.



Bi-directional Travel

Reclaimers are large, and some can be difficult to maneuver in confined areas. With the SX-6 and SX-8, the ability to cut while moving forward or reverse eliminates this issue. There is no need to turn the machine around. With a simple toggle switch, the machine can be moved forward or reverse, and continue to cut in either direction, saving time and money.

Comfortable & User Friendly Cab

The ergonomic design of the sealed cabin ensures operator comfort and safety. An air-conditioning and heating system along with a cab pressurizer give the operator a comfortable and dust-free environment to work in. The cabin is also built with soundproofing to keep noise levels down.

Controls & Steering

The machine's controls and display screen are conveniently arranged and move with the seat to allow for safe and convenient machine operation. Joystick controls and four different steering modes increase maneuverability and ease of operation.



FEATURES AND MAINTENANCE

Variable Geometry Cutter Housing

A variable geometry cutter housing enables the SX series to achieve superior cutting, sizing, and mixing. The custom designed cutter housing and forward center positioned cutter offer the optimum amount of space between the cutter and housing, allowing for superior material sizing and flow. Additional room behind the drum facilitates exceptional mixing and incorporation of additives. Heavy-duty, hydraulically-adjustable front and rear doors provide for further control of sizing and material flow. The cutter housing is fixed to the mainframe of the machine, permitting the machine to easily handle the forces of bidirectional cutting.

Cutter Drum & Drive

The stabilizers/reclaimers have a cut width of 100 inches (2.54 m). A variety of drum options are available to obtain a cut depth of 20 inches (508 mm). Heavy-duty quick change and welded bases are available, as well as a variety of tooth spacing, to better fit the demands of your project. The cutter is driven by a mechanical v-belt drive. The multi groove v-belts are hydraulically-tensioned, delivering consistent, efficient power to the cutter drum. Boltless entry to the cutter drive also provides quick and easy maintenance access.





1 Quick Change System

The cutter inserts include a combination of design features that make them more convenient and economical to maintain. The sleeve is designed with a longer wear nose for enhanced durability. Notches in the seating face allow the sleeves to be removed from the front with a small wedge tool. The QC holder fully seats against the base block for maximum retention and wear resistance.

2 Battery Slide Out

Ground level slide-out racks provide easier access to the machine's battery compartment.

3 Remote Air Compressor

Safety while changing teeth is assured with the remote air compressor, which provides power to the pneumatic tool allowing the machine itself to be powered off.

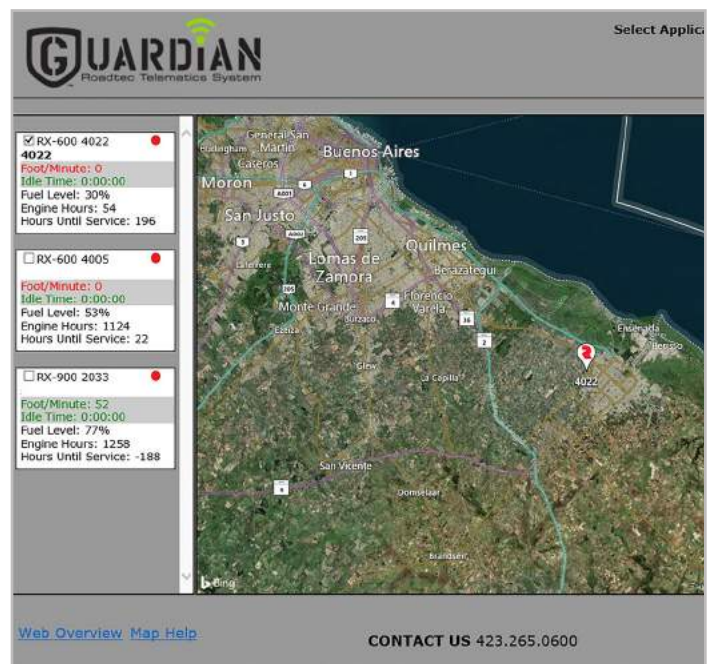
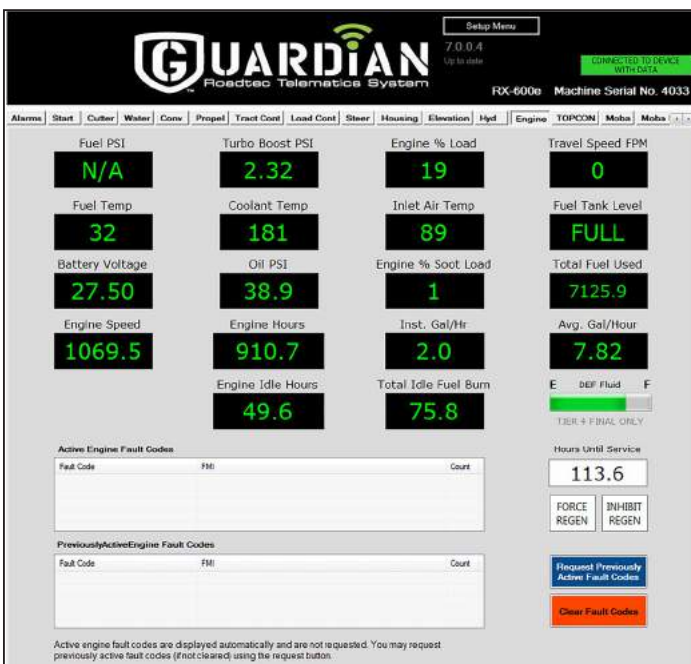
4 Easy Access

Hydraulically-adjustable doors allow for better access to the engine compartment. Quick and easy belt maintenance access is on the left hand side of machine.

MODELS AND OPTIONS

Protect your investment and keep operating costs low by monitoring your machines in real time through a wireless signal with the Guardian® Telematics System. Guardian is the industry's only live 2-way telematics system. Guardian includes software, on-machine viewing screens and wireless signal boosters to send and receive data in real time from anywhere at anytime.

Guardian provides the data you need to make changes in real time to mitigate risks and increase profits. Guardian's intuitive Live Schematics™ lets owners and technicians view electrical circuits in a simple, efficient layout with real time status of switches, valves, and settings.





SX-6

Detail	Spec
Engine	Cummins® QSX-15 675 hp (503 kW) @ 2,100 rpm
Shipping Weight	83,480 lb* (37,865 kg) <i>*120 gal fuels & water/injection system</i>
Cutting Width	100 in (2,540 mm)
Cutting Depth	20 in (508 mm)

SX-8

Detail	Spec
Engine	CAT® C18 755 hp (563 kW) @ 1,900 rpm
Shipping Weight	83,000 lb* (37,648 kg) <i>*120 gal fuels & water/injection system</i>
Cutting Width	100 in (2,540 mm)
Cutting Depth	20 in (508 mm)

Options

Tow Hitch
Rear assembly tow hitch to pull tanker
Additional Lighting
(4) 24v high intensity discharge lights
Additional Cameras
2 or 4 with additional display screen
Drum Spacing (weld-on or quick change tooling)
0.6 in (15.2 mm) and 0.875 in (22.2 mm)



ASTEC™

www.astecindustries.com