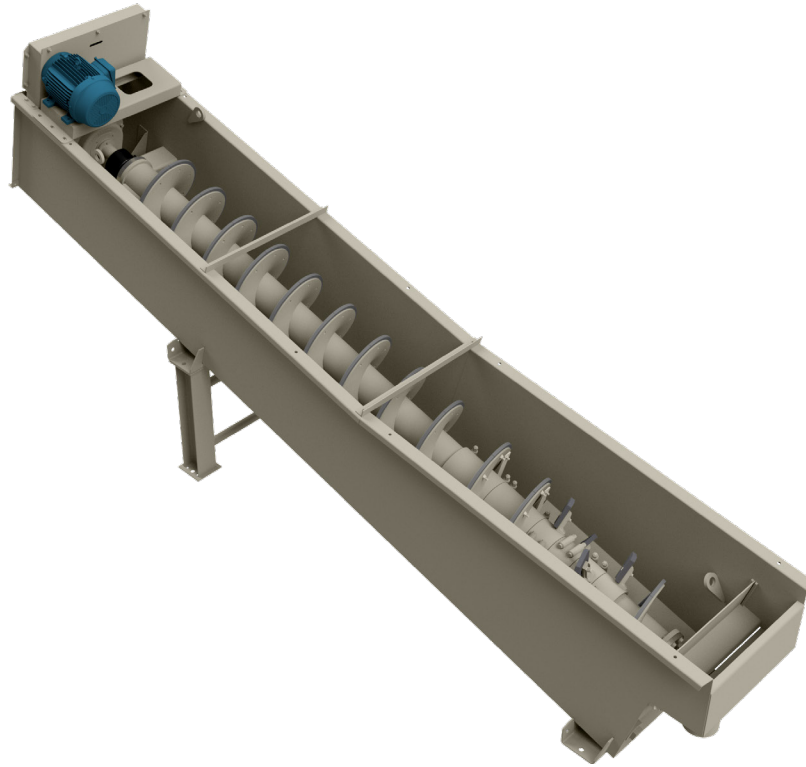


# 6024-15S

## Coarse Material Washer



### Main Tank

- 3/16" (sides & bottom) and 3/8" (rear end plate) welded plate steel construction
- Integral rising current manifold with 4" inlet
- Long narrow tub
- Full width overflow weir
- Overflow flume with 6" dia. outlet

### Spiral Assembly

- Spiral pipe - heavy wall 8" dia.
- Double pitch, combination flight/paddle configuration
- Standard configuration - Four (4) bolt-on paddle assemblies (two (2) replaceable Ni-Hard paddle tips per assembly) and two (2) bolt-on flight assemblies; balance of the spiral assembly is welded solid flights with bolt-on Ni-Hard wear shoes (see reverse side for additional information and optional configurations)
- Greaseable, externally mounted Dodge® Imperial E tail end flange bearing
- Greaseable Dodge® Type E pillow block head end bearing
- Lower end seal - chrome plated stainless steel wear sleeve, water tight bellows type rubber seal and secondary grease seal

### Drive Assembly

- High efficiency v-belt drive assembly
- 15hp TEFC motor
- Dodge TA-II double reduction shaft mount reducer

### Discharge Chute (Optional)

- Tapered discharge chute set at 45° angle to grade

### Support Assembly (Optional)

- Head-end support weldment with 6" wide flange columns

## Physical/Operating Characteristics

Dimension	Standard	Metric
Feed Material Size	-2 1/2" x +3/8"	-63.5mm x +9.53mm
Angle of Operation	15°	15°
Capacity Up To	75 TPH	68 MTPH
Shaft Speed	40 RPM	0.67 Hz
Water Requirements Up To	400 GPM	90.85 m <sup>3</sup> /h
Operational Length	18' 6"	5.64m
Operational Width	3' 3"	0.99m
Operational Height	8' 6"	2.59m
Dead Load	6,200lb	2,812kg
Live Load	9,000lb	4,082kg
Total Load	15,200lb	6894.6kg

Model	Capacity (TPH)	Spiral Speed (RPM)	Minimum Motor HP	Water Required*
Single Spiral Configurations				
6024-15S	60-75	40	15	300-400
6036-19S	150-175	30	25	400-600
Twin Spiral Configurations				
6036-19T	300-350	30	25	700-900

\*GPM at 25 PSI

Notes:

Two (2) motors required on twin units.

24" diameter unit offered only in single spiral configuration.

