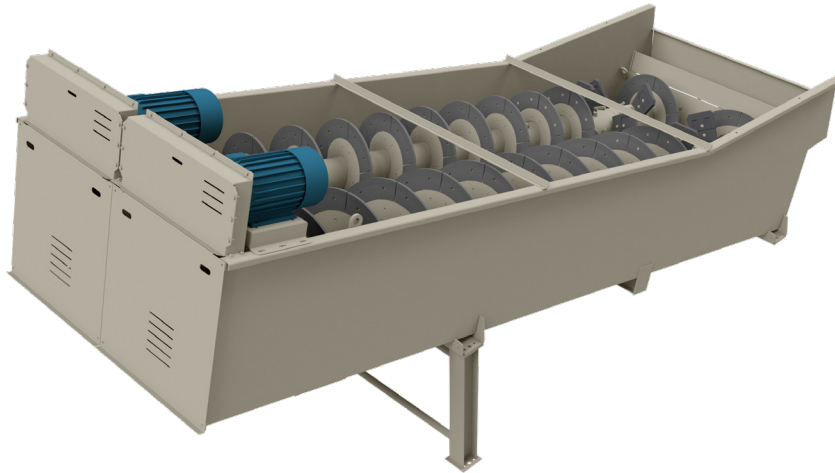


6036-19T

Coarse Material Washer



Main Tank

- 1/4" (sides & bottom) and 3/8" (rear end plate) welded plate steel construction
- Integral rising current manifold with 4" inlet
- Long narrow tub
- Full width overflow weir
- Overflow flume with 6" dia. outlet

Spiral Assembly

- Spiral pipe - heavy wall 12" dia.
- Double pitch, combination flight/paddle configuration (one right hand & one left hand)
- Standard configuration - Four (4) bolt-on paddle assemblies (two (2) replaceable two piece Ni-Hard paddle tips per assembly) and two (2) bolt-on flight assemblies; balance of the spiral assembly is welded solid flights with bolt-on AR steel inner and Ni-Hard outer wear shoes (see reverse side for additional information and optional configurations)
- Greaseable, externally mounted Dodge® Imperial E tail end flange bearing
- Greaseable Dodge® Type E pillow block head end bearing
- Lower end seal - chrome plated stainless steel wear sleeve, water tight bellows type rubber seal and secondary grease seal

Drive Assembly

- High efficiency v-belt drive assembly
- 25hp TEFC motor
- Dodge TA-II double reduction shaft mount reducer

Discharge Chute (Optional)

- Tapered discharge chute set at 45° angle to grade

Support Assembly (Optional)

- Head-end support weldment with 6" wide flange columns

Physical/Operating Characteristics

Dimension	Standard	Metric
Feed Material Size	-2 1/2" x +3/8"	-63.5mm x +9.53mm
Angle of Operation	15°	15°
Capacity Up To	350 TPH	350 TPH
Shaft Speed	30 RPM	0.5 Hz
Water Requirements Up To	900 GPM	204.4 m ³ /h
Operational Length	23' 9"	7.24m
Operational Width	7' 7"	2.31m
Operational Height	10' 11"	3.33m
Dead Load	17,000lb	7,711kg
Live Load	37,000lb	16,783kg
Total Load	54,000lb	24,494kg

Model	Capacity (TPH)	Spiral Speed (RPM)	Minimum Motor HP	Water Required*
Single Spiral Configurations				
6024-15S	60-75	40	15	300-400
6036-19S	150-175	30	25	400-600
Twin Spiral Configurations				
6036-19T	300-350	30	25	700-900

*GPM at 25 PSI

Notes:

Two (2) motors required on twin units.

24" diameter unit offered only in single spiral configuration.

